



WEATHERWEAVE

motorsport awnings



UK manufacturer
conveniently located
in the South East,
just 30 minutes
from the M25



KENT
MODELS

TAKATA

GFB
GO FAST BITS

Wossner
PERFORMANCE MOTOR
REPAIR & REBUILD

YSR

RACE AWNING RANGE - BUILT FOR PERFORMANCE

Discover the ultimate motorsport awning solution, designed with precision, durability, and flexibility to meet the demands of racing teams, event organisers, and vehicle setups.

Our modular, upgradable, and repairable awnings ensure long-term value. need more space? Simply add another bay! Whether you're a professional race team or need a reliable shelter for your event, we offer customisable options to fit your exact requirements.

Engineered for Motorsport. Made in Britain. Designed for You.



ProSport

AWNING



**BEST FOR: SMALLER RACING TEAMS, OUTDOOR
SPORTS CLUBS AND OUTDOOR TRADERS NEEDING A
PORTABLE, EASY-TO-SET-UP SHELTER**

Modular Heavy Duty Freestanding Awning

Available Projections 4mtr / 5mtr / 6mtr

ProSport

The ProSport awning is built for versatility, making it ideal for smaller teams, outdoor clubs, and traders where space, flexibility, and easy setup are critical. Its freestanding, single-pitch roof design ensures a reliable, stylish, and portable setup that can also be fixed back to a vehicle if needed. Whether operating from a van, trailer, or as a standalone unit, the ProSport offers a professional presence with effortless assembly and transport.

Key Features:

- **Modular Heavy-Duty Freestanding Design:** Add or remove bays easily to suit your event size.
- **Available Projections:** 4m, 5m, and 6m depths with 3m or 3.5m bay widths. *For example, a 4 Bay Structure would give you a width of 14m total if you chose 3.5m width bays.*
- **Height Options:** Standard 2.5m roof or a 3.2m Hi-Roof version is available, ideal for larger vehicle setups (standing alongside an artic trailer).
- **Roof Choices:**
 - Translucent roof panels (40% light transmission)
 - White roof (20% light transmission)
 - Coloured roof (0% light transmission)
- **Transport-Friendly:** Supplied with extra-tough large zip-top bags for easier storage.
- **Flexible Setup:** Freestanding with the option to fix back to vans, trucks, or trailers.
- **Customisation Options:**
 - Half walls, roll-up windows with blinds
 - Split colour walls or choice of coloured roof valance and mudflap
 - 19 colour options available
 - Artwork and branding opportunities including printing or stickers
 - Custom-designed VIP areas or specific layouts
 - Additional zip doors
 - Terrace-style walls
 - Internal dividing walls
 - Groundsheet floors
 - Outdoor VIP area designs



*'Ideal for go-karting, motorbike
and car teams operating from vans or
stand alone setups.'*



ProTeam

AWNING



**BEST FOR: LARGER MOTORSPORT TEAMS, SCOUT GROUPS
AND MARQUEE HIRE COMPANIES LOOKING FOR A
FLEXIBLE, HIGH-PERFORMANCE SHELTER**

Modular Heavy Duty Freestanding Awning - Ridge Roof Design

EXPANSIVE 8M PROJECTION AWNING


ProTeam

The ProTeam awning is designed to deliver expansive, adaptable coverage with a striking ridge roof profile. With its fixed 8-metre depth and modular 3m or 3.5m bay widths, it's perfect for events that demand both style and flexibility. Whether you're expanding a race team setup or hosting a group activity, the ProTeam offers the structure and presence of a marquee, with the practicality of a portable awning system.

Key Features:

- **Rigid Ridge Roof Design:** Creates a strong, pitched structure for maximum headroom and visual impact.
- **8m Fixed Depth:** Provides generous internal space with 3m or 3.5m modular bays for full adaptability. 4 Bays would provide you with a spacious width of 14m.
- **Modular Setup:** Add or remove bays to suit the size and shape of your setup.
- **Transport-Friendly:** Longest component is just 3.4m, supplied in heavy-duty zip-top bags for easy storage and transport.
- **Quick Assembly:** Engineered for simple setup and pack-down, saving time and effort.
- **Roof Panel Options:**
 - Translucent roof panels (40% light transmission)
 - White roof (20% light transmission)
 - Coloured roof (0% light transmission)
- **Durable Construction:** Features anodised aluminium framework with steel-plated brackets for strength and stability in all weather conditions.

Customisation Options:

- Half walls, roll-up windows with blinds
 - Split-colour wall options
 - Roof valance and mudflap colour options
 - 19 colour choices available
 - Branding options including artwork, printing, and stickers
 - Fully modular frame, roof, fronts, rears & sides – mix and match colours and configurations
 - Additional zip doors
 - Terrace-style walls
 - Internal wall or area dividers
 - Groundsheet floor
 - Outdoor VIP area design
- 



'Top choice for larger teams and events. With a ridge roof design and options for 3m or 3.5m bay widths, this awning provides expansive coverage.'

ProRace

AWNING



BEST FOR: MOTORSPORT TEAMS, MOBILE RETAIL, FOOD VENDORS AT FESTIVALS AND COMPANIES NEEDING A PROFESSIONAL, WEATHERPROOF DISPLAY OR HOSPITALITY SPACE

Modular Heavy Duty Vehicle Fixed Awning

EXPANSIVE - UP TO 8M PROJECTION


ProRace

The ProRace awning is specifically designed to extend seamlessly from race trucks, articulated lorries, and mobile setups, creating a secure, weatherproof space without leaks or gaps. With projections up to 8 metres and fully modular bays, the ProRace delivers outstanding flexibility, strength, and professional presentation for teams and operators on the move.

Key Features:

- **Large Projection:** Extends up to 8 metres, ideal for creating substantial covered areas.
- **Flexible Bay Sizes:** Available in 3m or 3.5m widths and can be customised to perfectly fit different vehicles and layouts.
- **Modular, Expandable System:** Add or reduce bays as needed to suit your event or operational needs.
- **Secure, Seamless Fit:** Engineered to connect cleanly to vehicles, preventing leaks and gaps.
- **Reliable Weather Protection:** Built to withstand varied and challenging outdoor conditions.
- **Roof Panel Options:**
 - Translucent roof panels (40% light transmission)
 - White roof (20% light transmission)
 - Coloured roof (0% light transmission)
- **Transport-Friendly:** Comes with extra-tough zip-top bags for easy and durable storage.
- **Durable Construction:** Heavy-duty modular frame with a range of colour options for a standout, tailored finish.

Customisation Options:

- Half walls, roll-up windows with blinds
 - Split colour walls or choice of coloured roof valance and mudflap
 - 19 colour options available
 - Full artwork and branding services, including printing and sticker options
 - Modular frame, roof, fronts, rears, and sides — fully mix and match
 - Additional zip doors
 - Terrace-style walls
 - Internal walls and area dividers
 - Groundsheet floors
 - Bespoke outdoor VIP areas
- 



Vehicle Fitting for the ProRace Awning

To ensure a precise and secure fit, all ProRace awnings require an in-person fitting at our Rayleigh, Essex premises. During this appointment, we will install the keder rail and lorry brackets, providing a seamless attachment for your awning.

What to Expect on the Day:

- Arrival Time: 8:00 AM
- Fitting Duration: Approximately 4 hours (but please allow a full day in case of unforeseen challenges).
- Facilities Available: On-site amenities and easy access to Rayleigh High Street for food and conveniences.
- Once the fitting is complete, your vehicle is ready to go, and we begin manufacturing your awning.
- Book your fitting today and get your ProRace awning in motion!





GETTING TECHNICAL

The Framework

The right support.

All of our Awning framework is made from the highest grade aluminium and steel. Each frame is designed to make life easy when it comes to construction and de-construction. Light weight main beams and easy fittings mean our products can be put up by as few as two people.

Aluminium

All of our aluminium sections come complete with an anodised coating as standard. This gives it a smart finish and hard coating to protect it during its time of use.

Steel

Our steel components are very tough and reliable. These parts are zinc plated which compliments the silver anodized finish of the aluminium.



The PVC

All of the PVC used to make each cover is both Fire and UV rated. To allow an extra long lease of life, an anti fungal coating is also applied to help against unwanted grime.

Colours Available

Stand out in the crowd and pick the colour that’s right for you. With 19 colours available (at no extra cost) you can do just that.

Samples

Unsure? Contact us to arrange for a selection of samples to be sent in the post.



POLAR WHITE



NATURAL WHITE



CREAM



BLACK



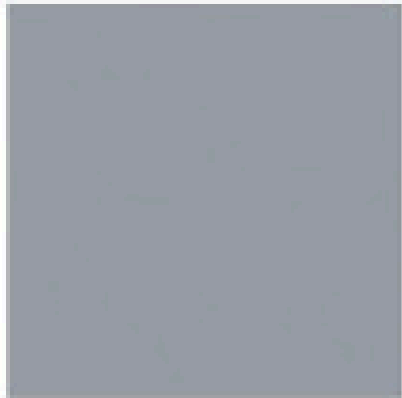
DARK GREEN



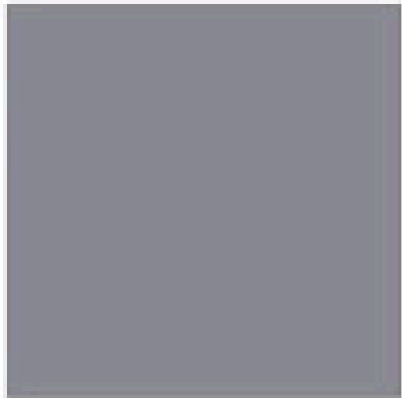
LIGHT GREEN



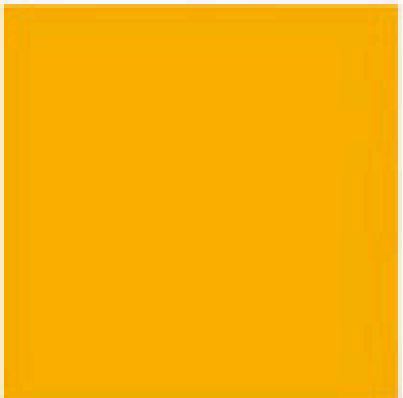
LIGHT GREY



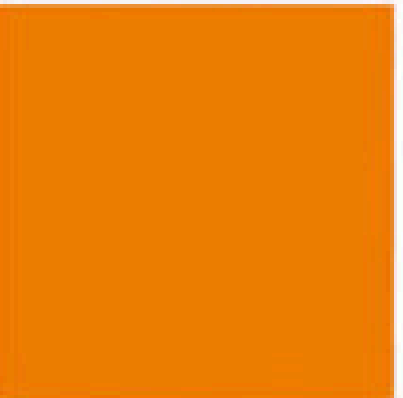
MEDIUM GREY



DARK GREY



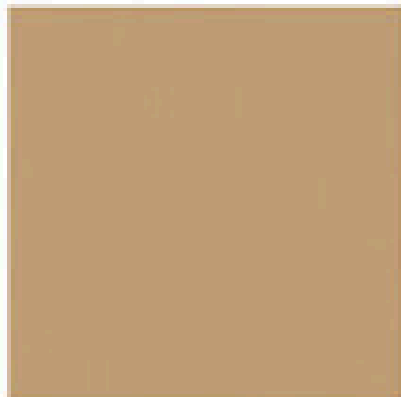
YELLOW



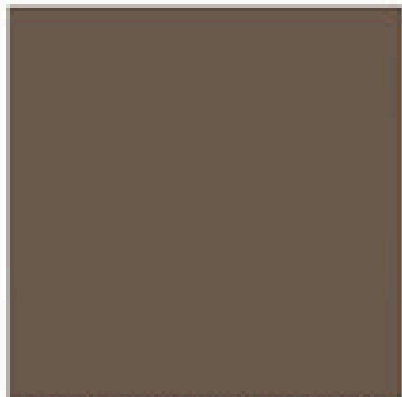
ORANGE



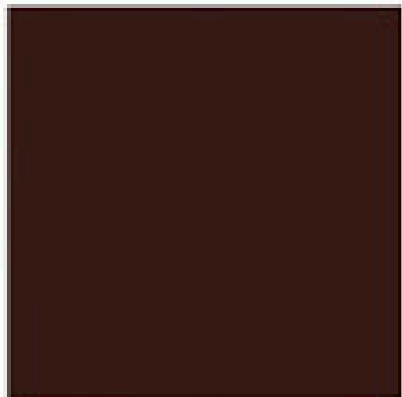
RED



LIGHT BROWN



MEDIUM BROWN



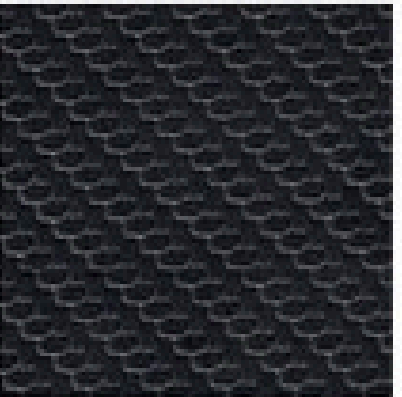
DARK BROWN



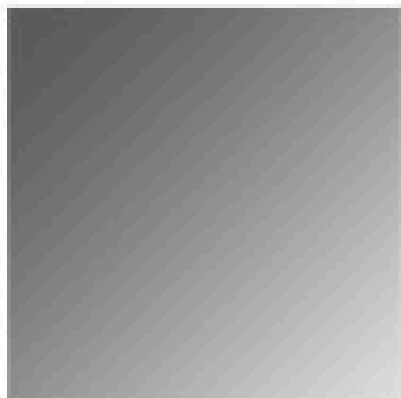
LIGHT BLUE



DARK BLUE



CARBON



SILVER

Basecloth
Weight
Flame Retardancy
Tensile Strength
Tear Strength

High tenacity polyester (1100 dtex)
680gsm
M2 / B1 / BS / B-s2-d0
260/250 daN
35/28 daN

UPGRADES AVAILABLE ON ALL OF OUR RANGE - Give us a call



Window & Blind Options for your walls.
Fully integrated in your panel or split wall
option with a split beam terrace, so that
the top half can be rolled up separately.



Printed Sheets, choices of hand applied
vinyl artwork or large format printing.
Just adding a strapline to your roof
valance, makes a difference!



Hard door, windows or panel upgrades, manufactured
here in house.. Ideal for Hospitality look and feel.



**Your Idea! - Let us know what design you
have in mind, we are here to help.**

Design Service

Investing in the right structure is a big decision. From the first conversation, we work closely with you to understand your needs and deliver a solution that is built to perform. Our in-house team ensures that everything from design to production, meets the highest standards.

On request, we offer a design service which provides you with a visual to check that everything is just where it should be. This is available, free of charge to you, for any size awning.

YOUR IDEA



REPAIRS, SPARES & ACCESSORIES

We expect your awning cover to provide you with years of reliable service, but we know that accidents happen, and wear and tear is inevitable over time.

If you need a zip repaired, a PVC patch and fix, or new accessories, just give us a call, we'll be happy to arrange a booking for sheet repairs, metalwork repairs, and servicing.

For parts and accessories, browse our catalogue online, where you'll find all the little things that tend to go missing in the rush of packing up after a race weekend, or the parts you might need if your cover has seen its fair share of weather. To place an order, simply call or email us we're happy to take payment over the phone and will dispatch your items as soon as possible.

If you can't find what you're looking for, get in touch, we're always happy to help.



Groundsheet, Storage and Water Weight Bags made to order. You will find the details in our parts & accessories catalogue, available to download on the website.



All of our awnings come with a set of storage bags, but if you need extra or replacements, you will find all sizes available in the catalogue.



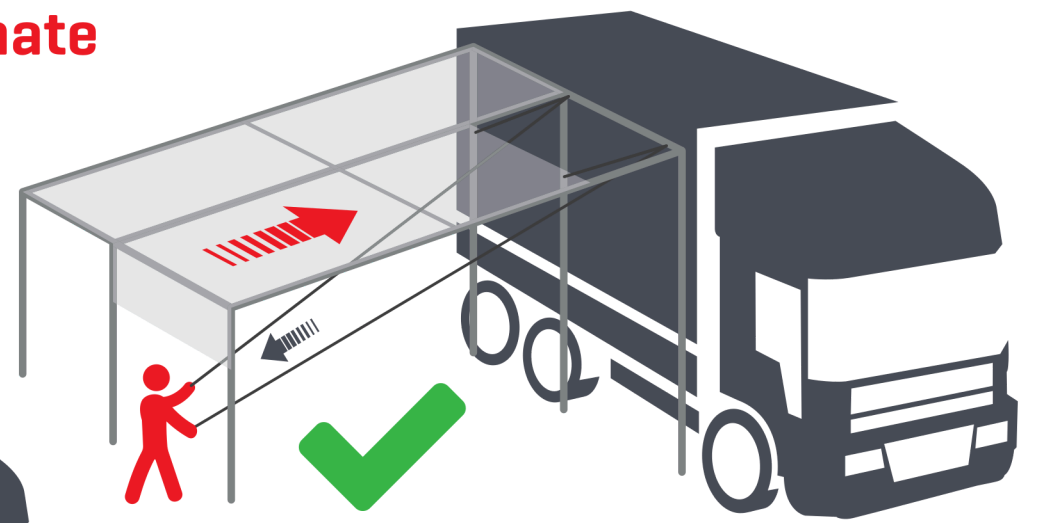
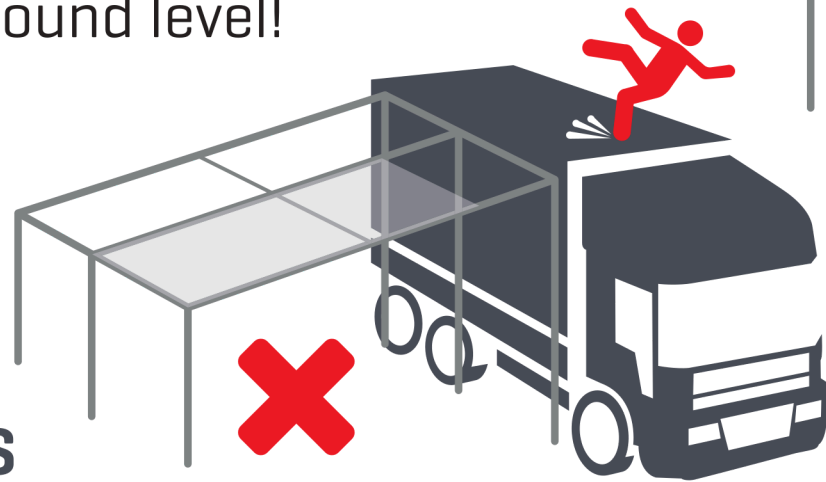
STOP

RISKING YOUR CREWS SAFETY

Convert your Race Awning with our roof safety kit and eliminate the risk of installing roof panels from the top of your trailer!

Our **NEW** Roof Installation Kit, means your crew can fit roof panels safely and easily from ground level!

- ✓ **TOTALLY SAFE SYSTEM**
- ✓ **FITS MOST AWNINGS**
- ✓ **EASY TO INSTALL & USE**
- ✓ **ELIMINATES RISK**
- ✓ **NO NEED FOR HARNESES**



Contact us for details and pricing to convert your Race Awning

 **01268 774 141**  weatherweave.uk

WEATHERWEAVE LTD. 12-16 HOCKLEY ROAD, RAYLEIGH, ESSEX SS6 8EB


WEATHERWEAVE
motorsport awnings

CONTACT US

We hope you've enjoyed exploring our site! Our goal was to keep things short enough to hold your attention while covering everything you need to know.

No matter how you choose to reach out, you can count on quick responses, clear communication, and our full dedication to meeting your needs. We look forward to working with you to create the perfect solution.

Get in touch:

 01268 774141

 sales@weatherweave.co.uk

Weatherweave Ltd, 12 - 16 Hockley Road, Rayleigh, Essex SS6 8EB

Whether you have a question, need a quote, or want to discuss a project, we're here to help. Just give us a call or send us an email, we'll be happy to assist.



FIND US - WWW.WEATHERWEAVE.UK

