

*There is  
nothing like...*

**FRESH**



**WEATHERWEAVE**

**SHEETS**

Upgrade with a set of new covers or add some branding.

**AWNING RE-COVER SERVICE**

*Looking good!*



**MANNPOWER**  
motorsport

RACING  
CARBON NEUTRAL



**MANNPOWER**  
motorsport



# Stay sharp.

**Give Your Awning a New Lease of Life and Freshen your Style with New Walls and Roof Sheets. Upgrade with Windows or Printing!**

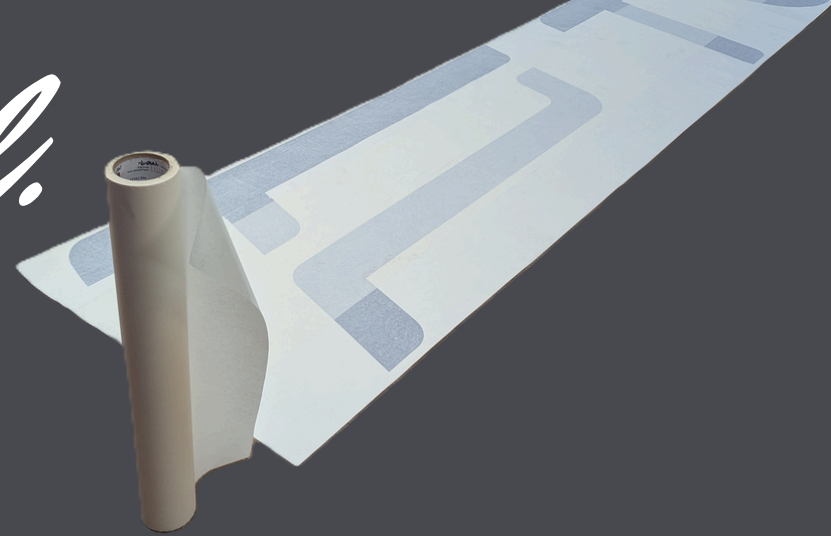
Already have an awning that's looking tired? Our complete re-cover service lets you keep your existing frame while replacing the roof and wall panels, giving your setup a fresh, updated look. This is also a great opportunity to upgrade your awning with custom branding, new windows, or additional features to enhance functionality and style.

#### **Take Advantage of These Upgrade Options:**

- New White Roof Sheets – Brighten and refresh your awning from the top down
- Awning Walls – Choose plain, windowed, or go for a terrace wall upgrade for added versatility
- Fresh Branding – From vinyl sticker applications to full large-format digital print
- Colour Options – A wide selection of colours to match your team or brand
- Split Colours & Matching Details – Go bold with split-colour walls or co-ordinate your mudflaps and valances for a sharp, unified finish



# Professional.



## Give Your Awning a New Look

Choose from a wide range of UV stable, flame retardant PVC colours, add printed walls for brand impact, or refresh your setup with a new roof and valance. Matching mudflaps are the perfect finishing touch for a clean, cohesive look.

We understand that investing in a brand new awning is a big decision.

With the second hand market booming, many teams are turning to pre-owned units. The catch? Most come with the original owner's branding and replacements aren't always easy to source, especially from non-UK manufacturers.

Our re-covering service isn't just limited to Weatherweave awnings. We can manufacture replacement covers for a range of modular race units, even if we didn't supply them originally. If you're considering buying second hand, we're happy to advise on the best course of action to get your awning looking the part.

Re-covering can be a smart, cost effective way to refresh your setup with custom branding tailored to your team, all manufactured right here in Great Britain.



# Focused.

## Printed Walls for Freestanding Awnings.

In autumn 2025 we upgraded our in-house printing set-up, in doing so, this has allowed us to support our existing customers even better than before and the growing second-hand market.

Many teams purchase used awnings to manage their budgets but want to remove the previous owner's branding and create their own identity.

We can supply new plain or printed replacement walls and roof sheets for imported style freestanding units, and similar style awnings. Really great quality and available right here in the UK.

If you would like a price list or a quick chat about your setup, please feel free to give us a call, we'd love to help.



*Tip.*

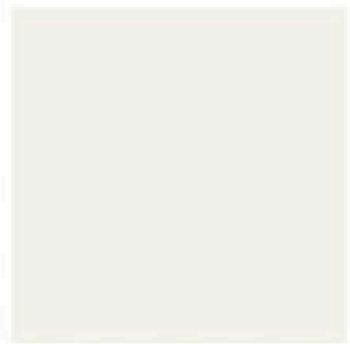
**Thinking about upgrading or buying used?  
Get in touch, we'll help you make the right call.**

- If you own, or are considering buying a second-hand race awning, it's worth knowing that design variations between manufacturers can make replacements more complicated than expected. Many imported awnings also have limited compatible parts available here in the UK, so a perfect fit is not always guaranteed.
- In some cases, re-covering a pre-owned or aged awning may not turn out to be the cost-saving option you were hoping for.
- We will always give you honest advice. If you would like to talk through your setup and explore the practical options, just give us a call. We are always happy to help.

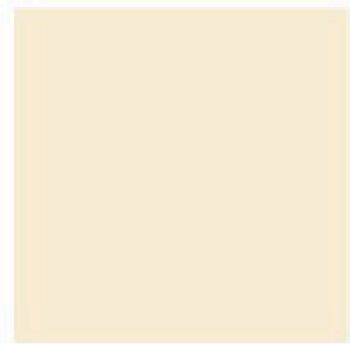




POLAR WHITE



NATURAL WHITE



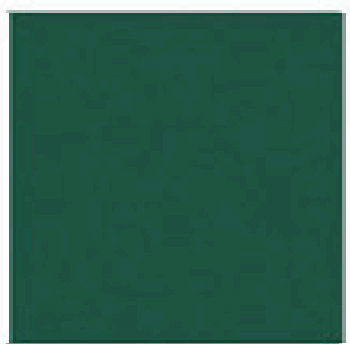
CREAM



BLACK



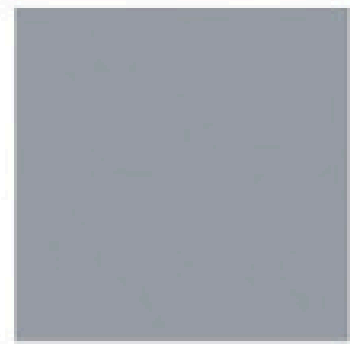
DARK GREEN



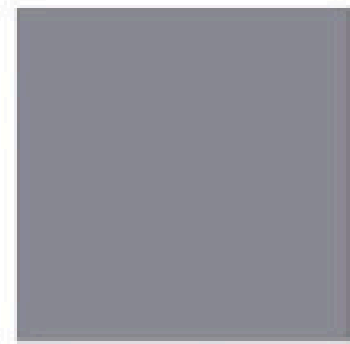
LIGHT GREEN



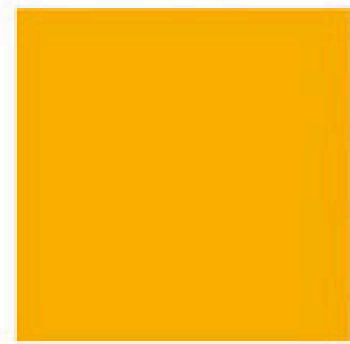
LIGHT GREY



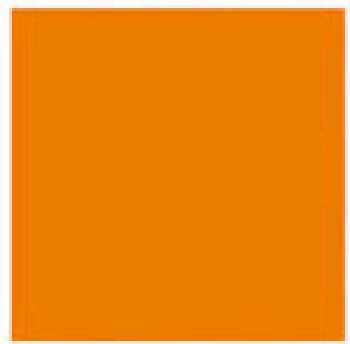
MEDIUM GREY



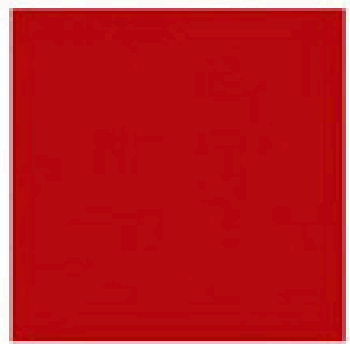
DARK GREY



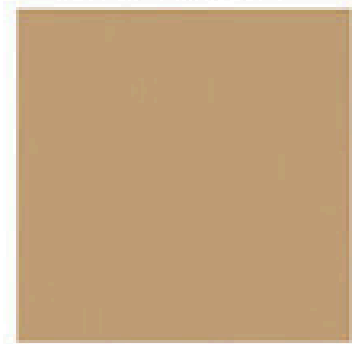
YELLOW



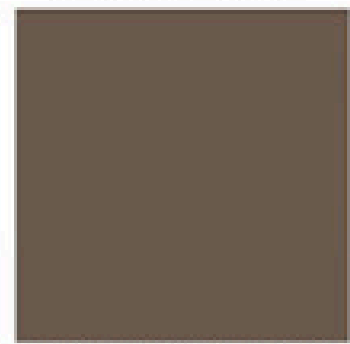
ORANGE



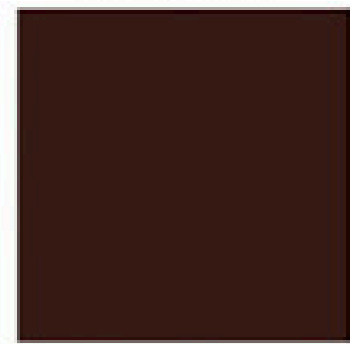
RED



LIGHT BROWN



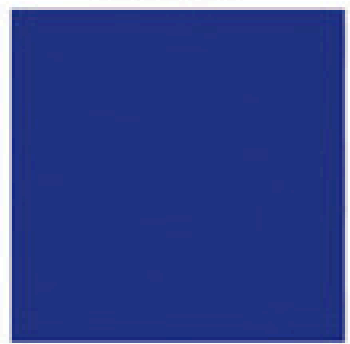
MEDIUM BROWN



DARK BROWN



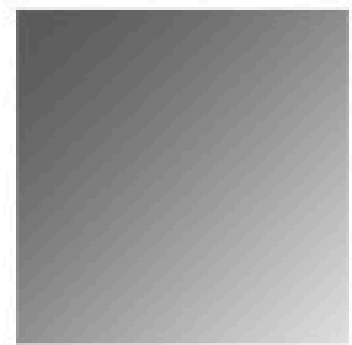
LIGHT BLUE



DARK BLUE



CARBON



SILVER

Basecloth

High tenacity polyester (1100 dtex)

Weight

680gsm

Flame Retardancy

M2 / B1 / BS / B-s2-d0

Tensile Strength

260/250 daN

Tear Strength

35/28 daN



Samples can be sent by post from a choice of 19 colours.

You can also choose split colour walls and select the roof valance or mudflap colour to suit your setup.



*It's in the detail. Make it yours.*

Need a new storage bag?  
We offer a range of storage solutions to keep your new sheets protected.

Also ask about our groundsheets to complete your set-up!



**Get in touch with us on:**

Tel. 01268 774141

Email. [sales@weatherweave.co.uk](mailto:sales@weatherweave.co.uk)

Weatherweave Ltd

12 - 16 Hockley Road

Rayleigh

Essex

SS6 8EB

FIND US - [WWW.WEATHERWEAVE.UK](http://WWW.WEATHERWEAVE.UK)

Manufactured in Great Britain 

